

610 UNCLE BUDDYS WAY

# THE AUDREY

MAIN LEVEL GARAGE - COURT YARD LEFT- SLAB



SQUARE FOOTAGE:	
MAIN LEVEL	2,260
SECOND FLOOR	424
TOTAL	2,684
GARAGE	517

SCALE: 3/16"=1'-0"

COVER

THE AUDREY

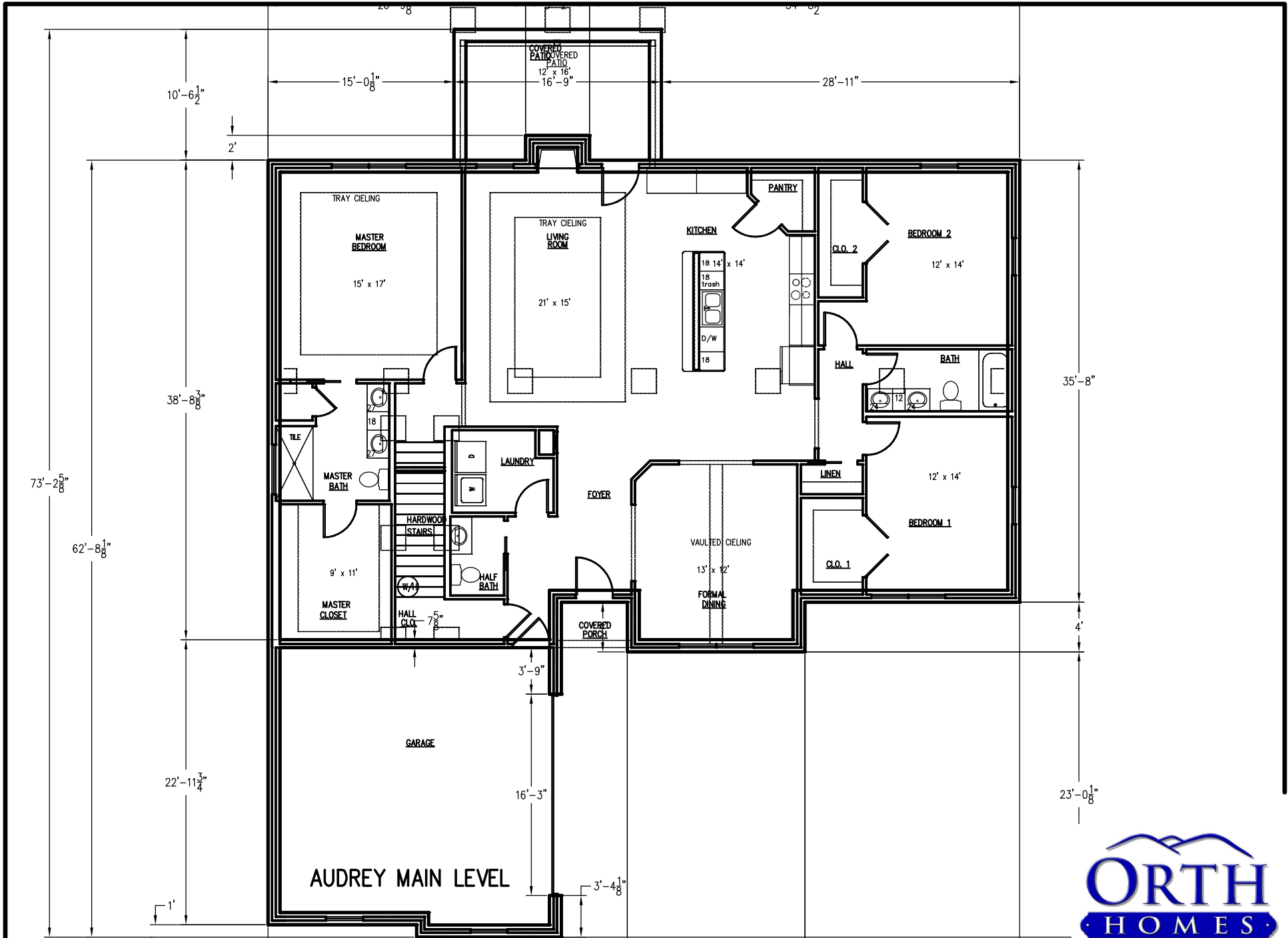
JOB #

P.O. JOB#

FINAL APPROVAL

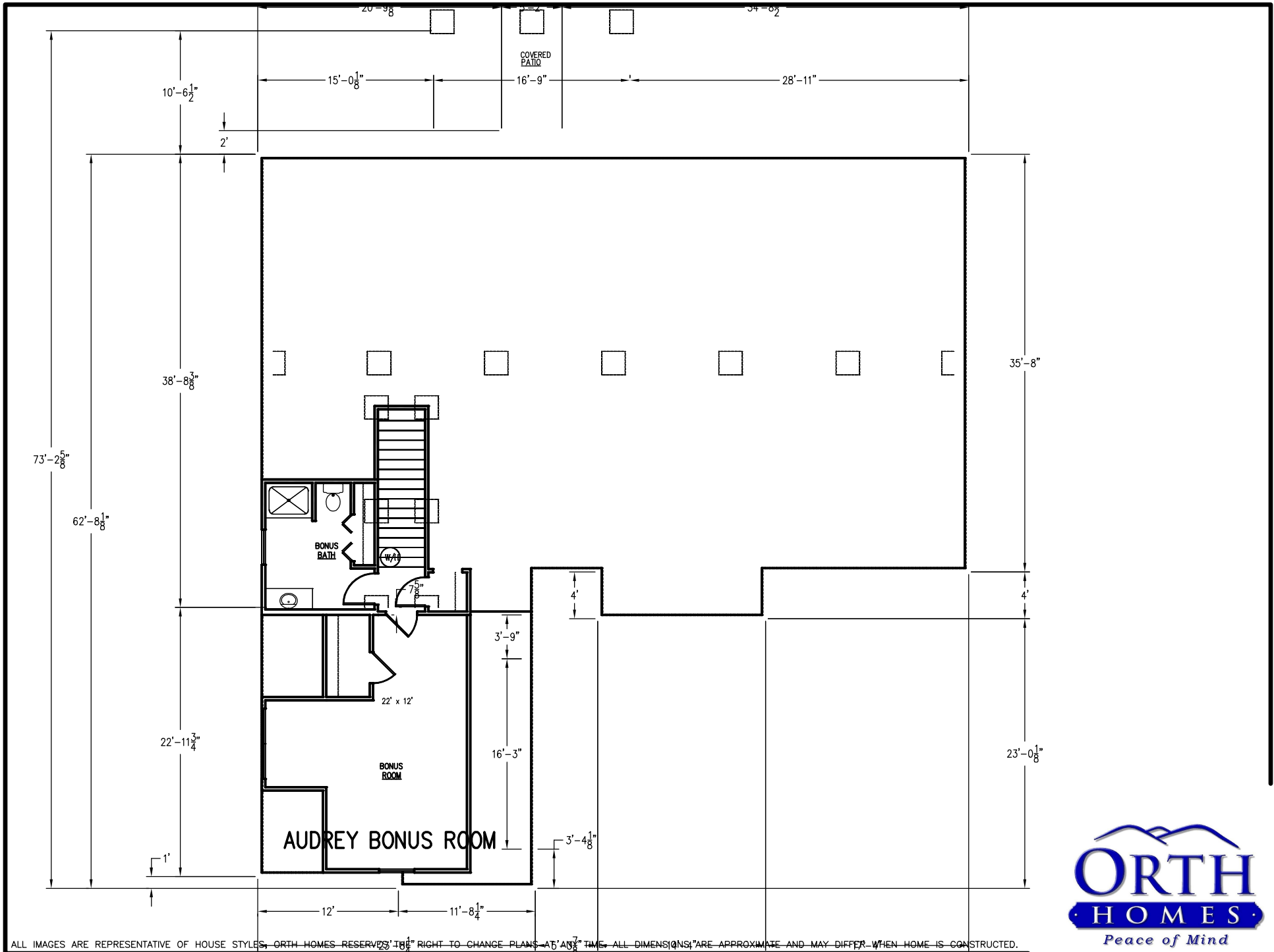
3312 WAYFIELD DRIVE  
JOHNSON CITY, TN. 37601  
PHONE: (423)979-0380  
FAX: (423)979-0381  
WWW.ORTHHOMES.COM





ALL IMAGES ARE REPRESENTATIVE OF HOUSE STYLES. ORTH HOMES RESERVES THE RIGHT TO CHANGE PLANS AT ANY TIME. ALL DIMENSIONS ARE APPROXIMATE AND MAY DIFFER WHEN HOME IS CONSTRUCTED.





ALL IMAGES ARE REPRESENTATIVE OF HOUSE STYLES. ORTH HOMES RESERVES THE RIGHT TO CHANGE PLANS AT ANY TIME. ALL DIMENSIONS ARE APPROXIMATE AND MAY DIFFER WHEN HOME IS CONSTRUCTED.

